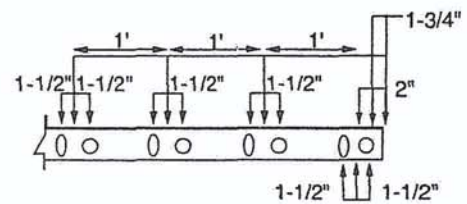
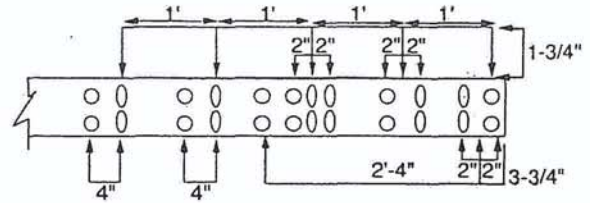


PUNCHING PATTERNS FOR CEES AND ZEES

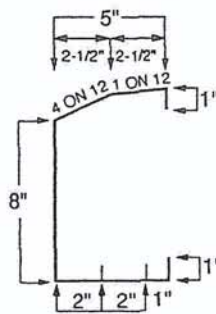
6" ZEE OR CEE	1"	4"	1"
7" ZEE OR CEE	1-1/2"	4"	1-1/2"
8" ZEE OR CEE	2"	4"	2"
9" ZEE	2-1/2"	4"	2-1/2"
10" ZEE OR CEE	3"	4"	3"
12" ZEE	4"	4"	4"



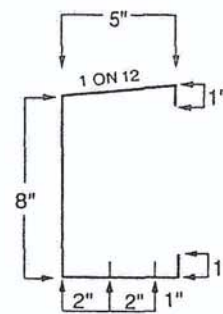
STANDARD PUNCHING PATTERNS FOR 8" X 5" EAVE STRUTS

Notes:
 1. Eave strut is 14 gauge.
 2. Universal eave strut is designed for all roof slopes 1:12 through 4:12.

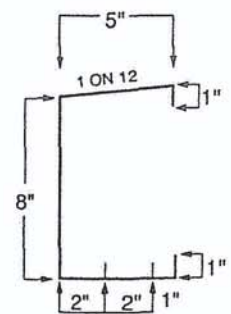
UNIVERSAL



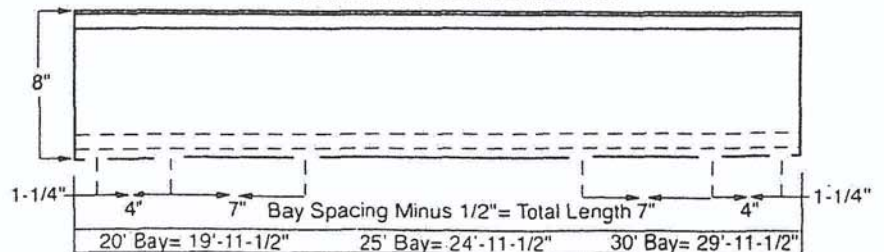
SINGLE SLOPE



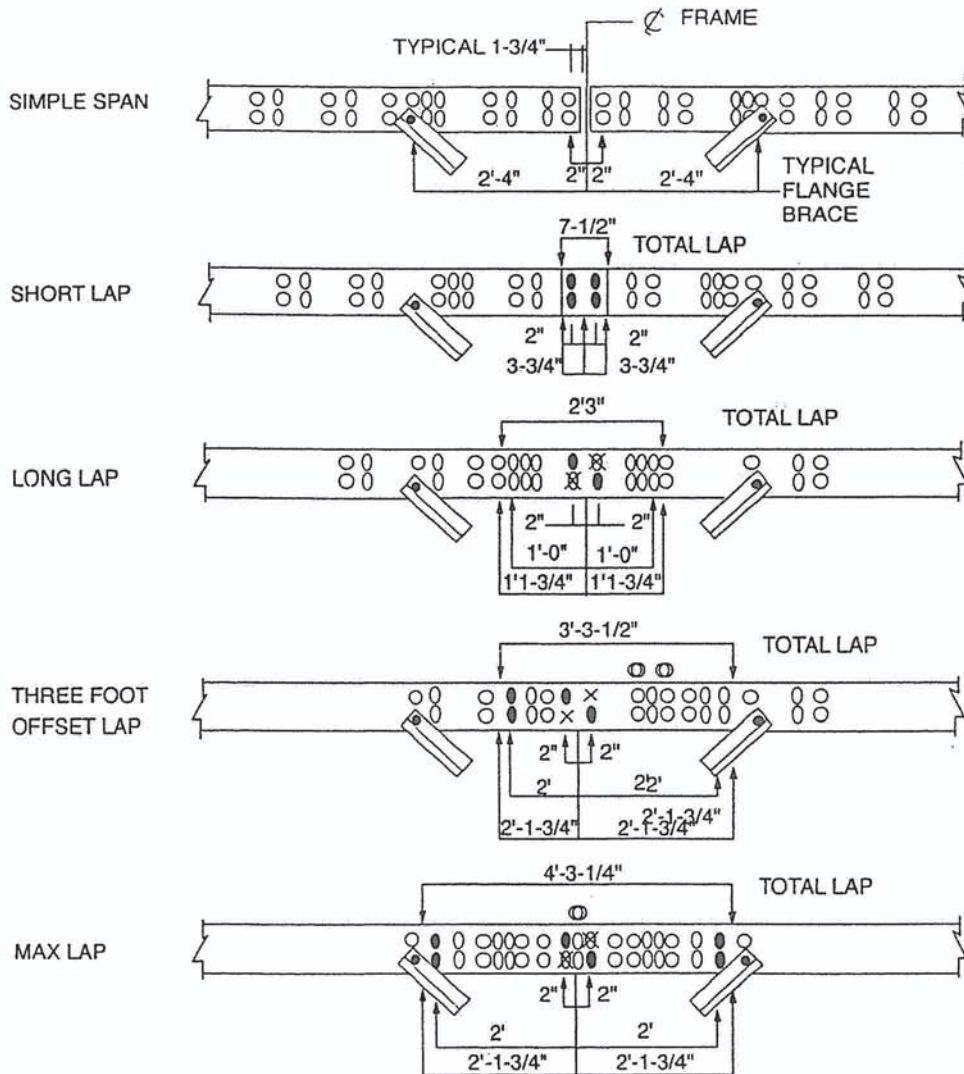
DOUBLE SLOPE



FLANGE PUNCHING SIDE VIEW



LAP PATTERNS FOR CEES AND ZEES



LEGEND	
○	Holes punched in purlin
●	Bolted holes
⊗	Holes normally not bolted
⊙	Holes that align but are not bolted